



# COMBIVERT SYSTEM V

4-QUADRANT DRIVE SYSTEM 600 ... 1000 KVA

# SYSTEM V

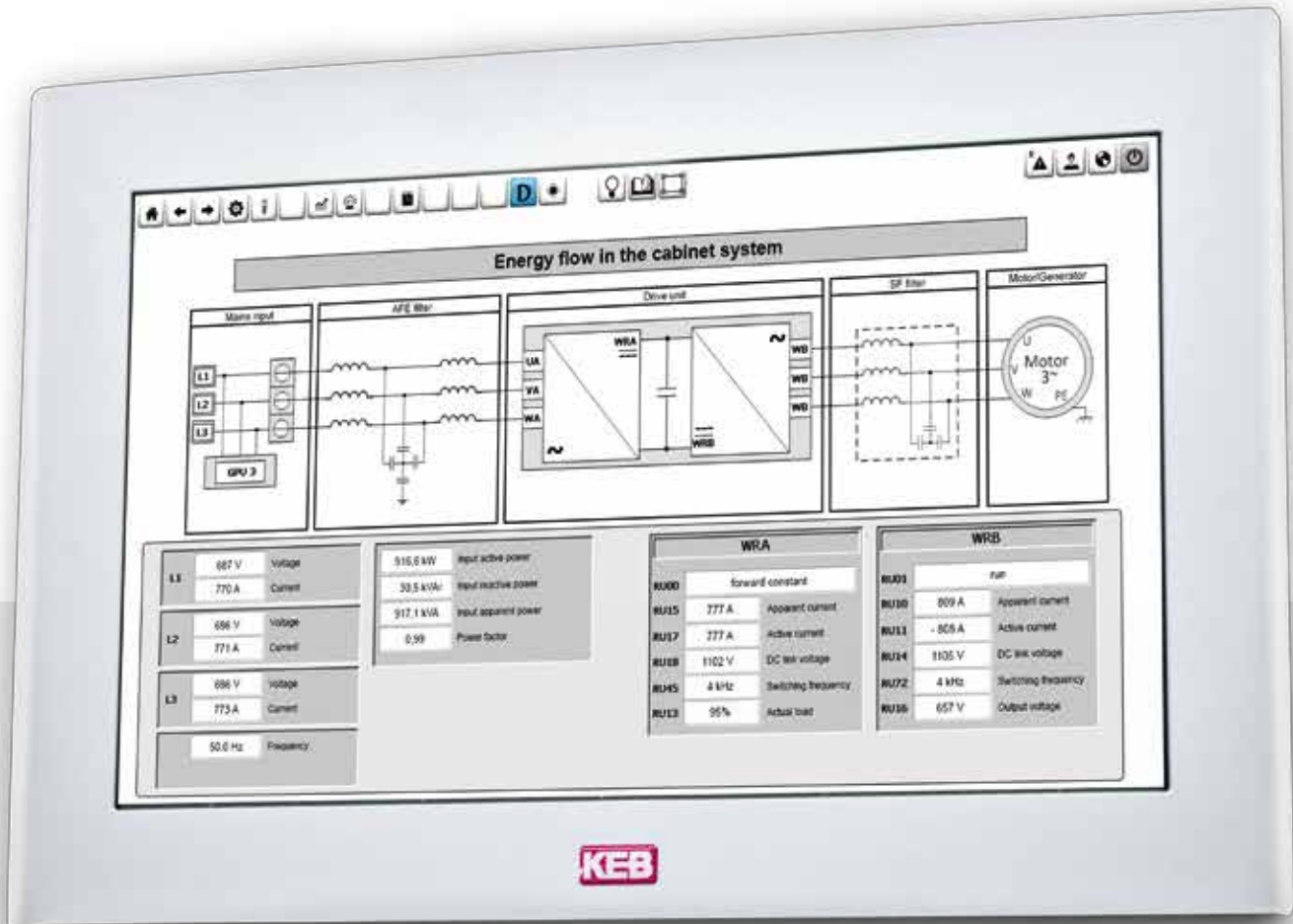


## MECHANICAL DIMENSIONS

Basic module		
H x W x D	mm	1800 x 1400 x 600 + base 200
Sine-wave filter module		
H x W x D	mm	1800 x 600 x 600 + base 200
Bus-bar connection		
H x W x D	mm	1800 x 300 x 600 + base 200
Weight		1500 kg

## ELECTRICAL DATA

Rated input voltage		$U_N$	690 V ac	
Input voltage range		$U_{in}$	400 ... 760 V ac $\pm 0\%$	
Mains frequency		$f_N$	50/60 Hz $\pm 2$ Hz	
Mains phases			3	
Approved mains forms			TN, TT	
Mains unbalances			8 %	
Rated switching frequency		$f_{SN}$	4 kHz	
			<b>SIZE 33</b>	<b>SIZE 37</b>
Rated input power	kVA	$S_N$	600	1.000
Max. input power	kW	$P_{max}$	450	710
Rated input current	A ac	$I_N$	500	820
Max. input current	A ac	$I_{in max}$	625	1.025
Rated output current	A ac		500	820
Max. short-time current limit	A ac		625	1230



**INCLUDED FEATURES**

- AFE with LCL filter
- Drive controller with optional sine-wave filter
- DC link coupling capability
- Integrated IEC 61131 PLC (free-programmable)
- 15.6" HMI
- Fieldbus: Profibus, Profinet, EtherCAT, CAN, Interbus, Powerlink
- EMC filter
- High IP54 of protection level (special design up to IP67K)
- Up to 4 encoder interfaces
- Router for remote access (GSM-/ UMTS or Internet)
- Mains measuring device
- Control via 24 V potential free terminal signals (additional)
- Liquid cooling 2.5" external thread



CronaTech Drives AB

[www.cronatech.se](http://www.cronatech.se) [info@cronatech.se](mailto:info@cronatech.se)

Tel +46 31 961520



**Automation with Drive**

**[www.keb.de](http://www.keb.de)**

KEB Automation KG Südstraße 38 32683 Bartrup Tel. +49 5263 401-0 E-Mail: [info@keb.de](mailto:info@keb.de)

© KEB 000000-51V6 03-2017 Subject to technical alterations!